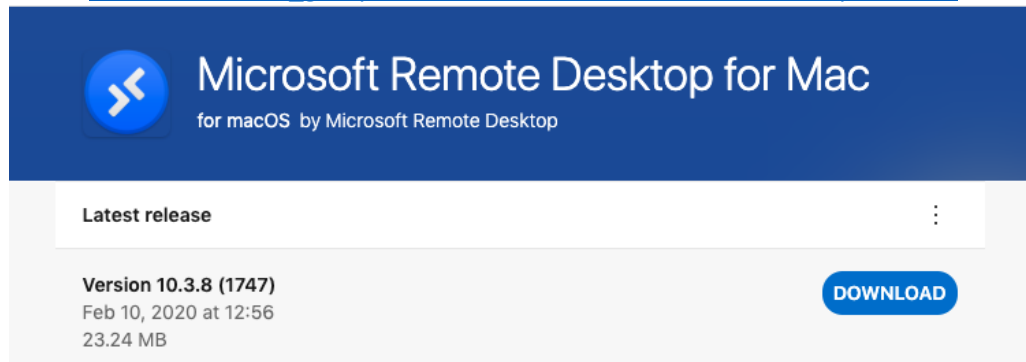


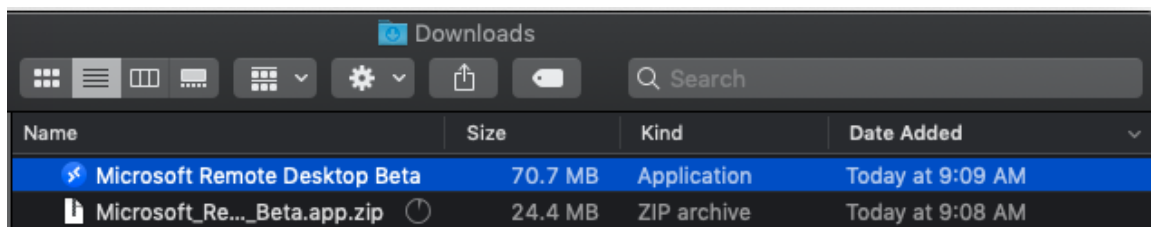
Home directory Access:

Connecting to WADE Virtual Server to set up WADE Home Directory from a Mac
Your computer may not have Remote Desktop installed, or have an outdated version of remote desktop installed. Go to this URL and click “DOWNLOAD”.

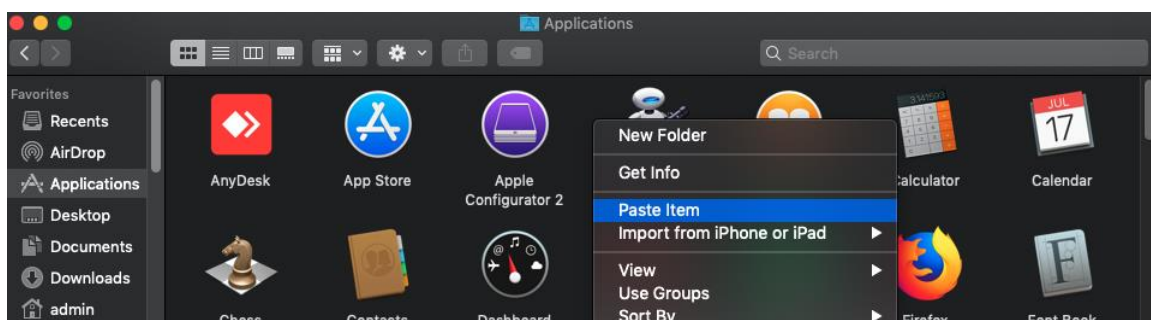
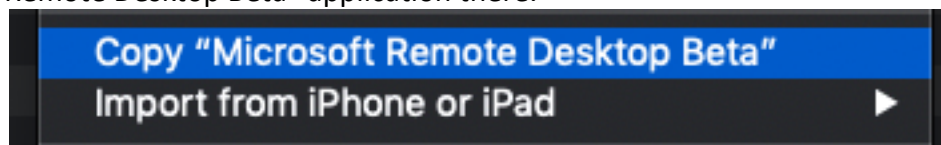
https://install.appcenter.ms/orgs/rdmacios-k2vy/apps/microsoft-remote-desktop-for-mac/distribution_groups/all-users-of-microsoft-remote-desktop-for-mac

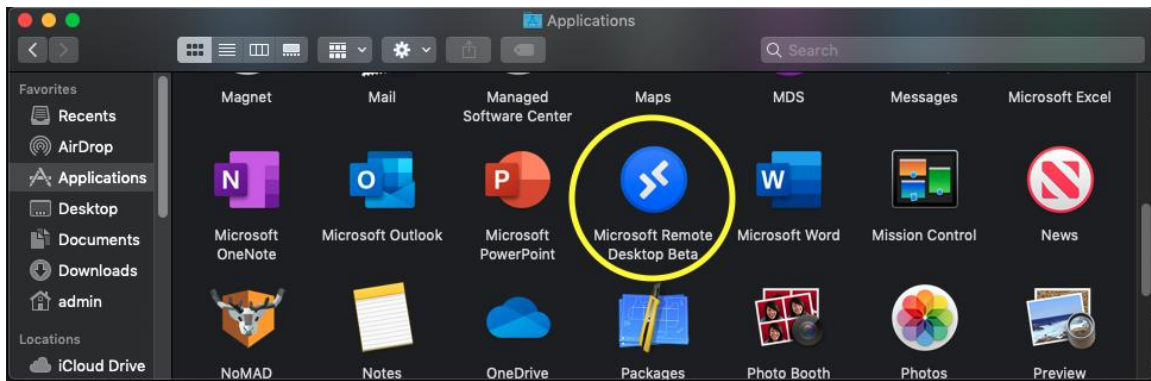


Once the file is downloaded, navigate to your downloads folder and double-click the zip file you just downloaded. This will copy the Remote Desktop App into your downloads folder.

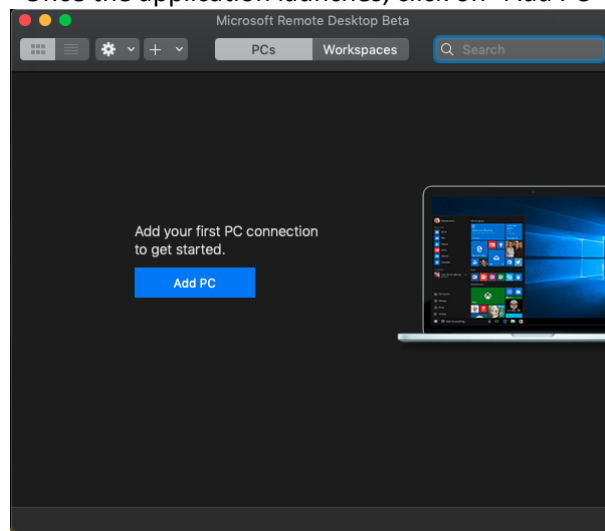


Now right-click to copy the application and go to your “Applications” folder. Paste the “Microsoft Remote Desktop Beta” application there.

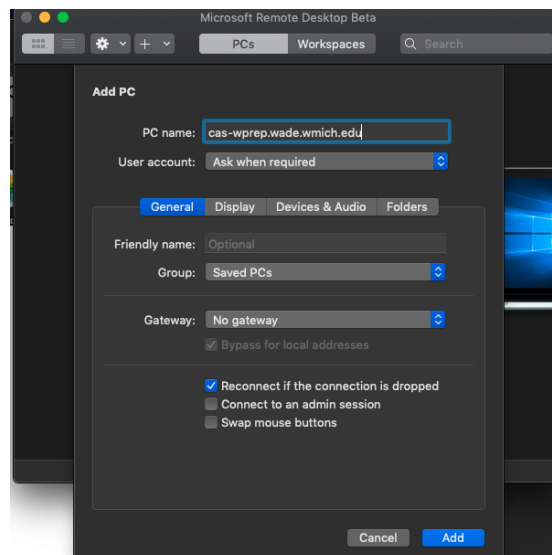




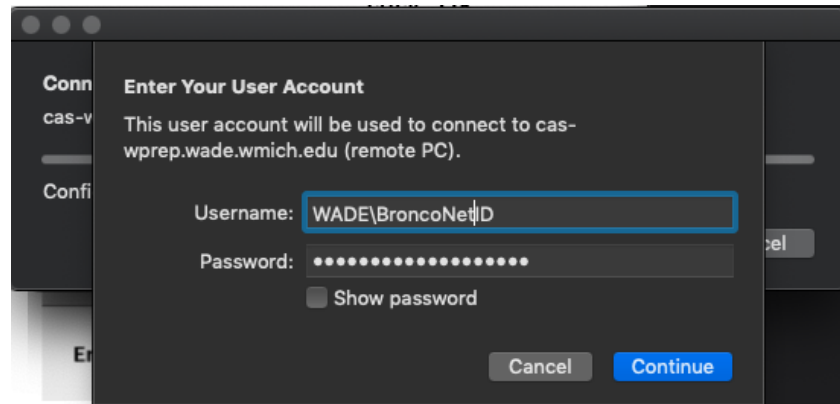
Once the application launches, click on “Add PC”



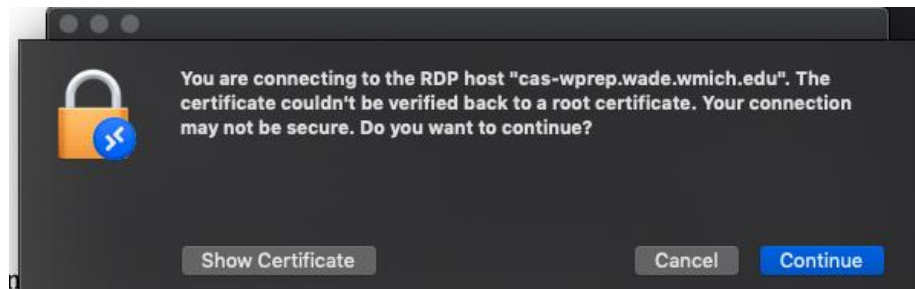
In the following window enter “cas-wprep.wade.wmich.edu” into the field marked “PC name” and then click “Add”.



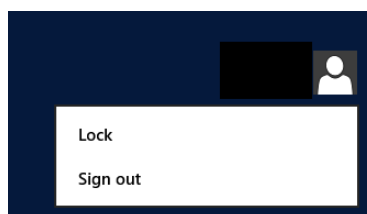
In the credentials window enter "WADE\" followed by your "BroncoNetID" (this would be the same ID you use to login to GoWMU, Webmail, etc) for the "User name:" and your BroncoNetID Password in the "Password:" field. Then click "Continue".



If you get a message like the one below, just click "Continue" to move through to the next steps.



This connects you to a server that creates your home directory so you can use it from your computer. Once connected, click "Start" and click "Log off".



(Upper right corner)

You can then connect to your share drives using one of the methods mentioned below.