

File Server access (OFF Campus): VPN*

Prerequisite: Java Installation required Faculty and Staff laptops will have Java and VPN client preinstalled. This is just for reference.

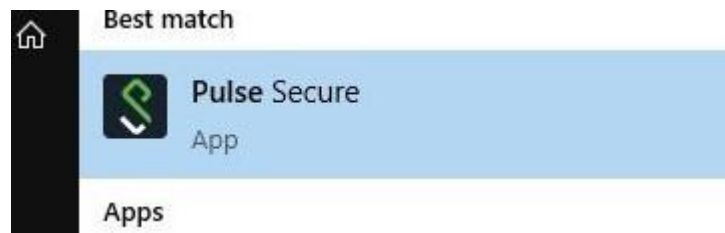
First check to make sure the VPN client has not already been installed. Go to the start menu.



In the search bar type in “Pulse Secure”



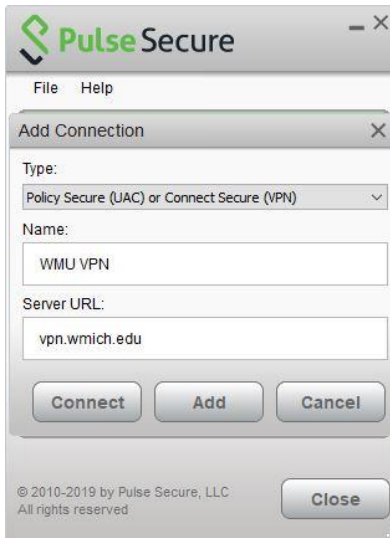
If this program comes up in your search, you do not have to re-install the Pulse Secure client; you can just open the application from there.



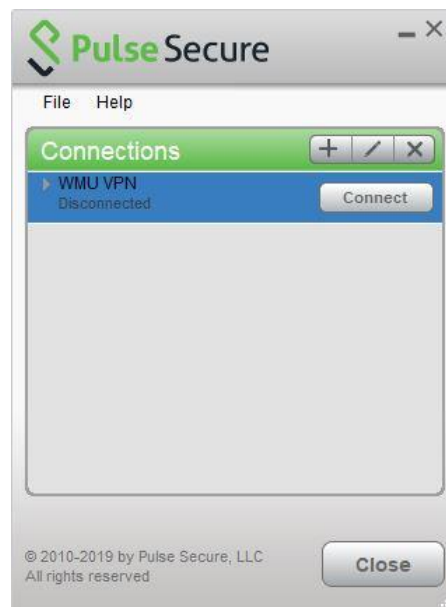
If you do not have any connections in your window when you first start up Pulse Secure, start by clicking on the “+” button to create a new connection.



In the window that pops up you will be able to create a nickname for the connection. This can be set to something like “WMU” or “WMU VPN”. The text box below that is for the server URL. In this box, enter “vpn.wmich.edu”. Click on the “Add” button when you are done.



In the Pulse Secure app, you should now see your connection. To start connecting click on the “Connect” button next to your WMU connection and then enter your BNID and password when a new window appears.





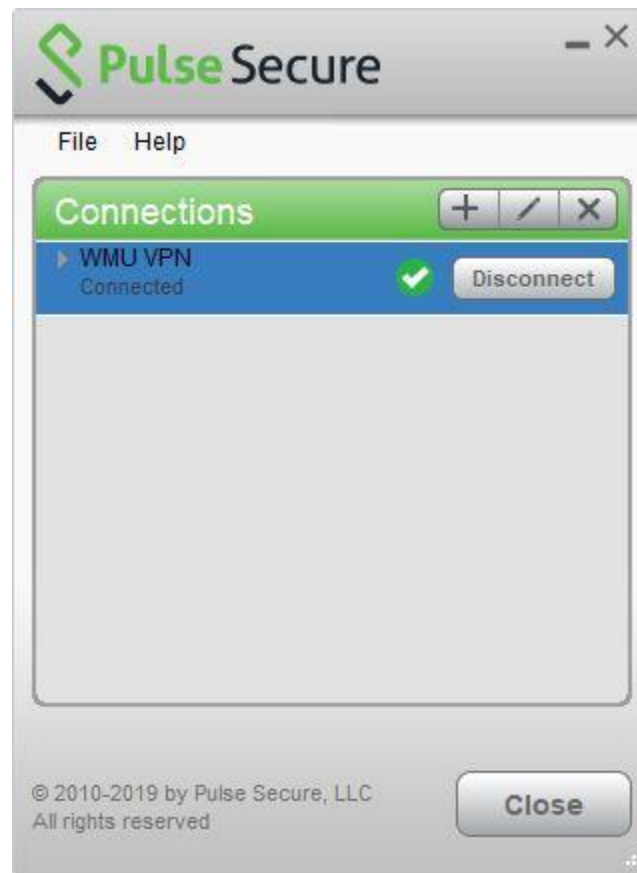
The image shows the Pulse Secure application window. At the top is the Pulse Secure logo. Below it, the text "Connect to: WMU VPN" is displayed. There are two input fields: "User Name:" with the text "BNID" entered, and "Password:" with a series of dots. Below the password field is a checkbox labeled "Save settings". At the bottom right are two buttons: "Connect" and "Cancel".

Next, the app will ask you to enter a secondary password. This is a code that you can get from opening your DUO app on your phone and tapping on the “Western Michigan University” entry, the code from your Two-Factor key fob, or one of the codes that were texted to you via DUO.



The image shows the Pulse Secure application window after the first login attempt. It has the same title and "Connect to: WMU VPN" text. A message box with a question mark icon says "Provide the following credentials to complete the connection." Below this are two input fields: "Secondary User Name:" with a blurred code entered, and "Secondary Password:" with a single vertical bar entered. There is a "Save settings" checkbox and "Connect" and "Cancel" buttons at the bottom.

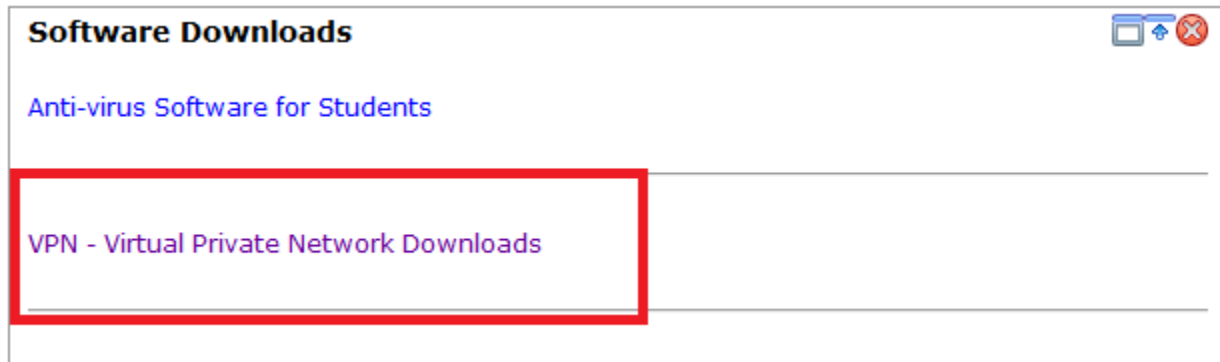
From here, you should be connected to the VPN. You can always check this by opening the Pulse Secure app and looking for the check mark next to the WMU connection.



Alternate method if VPN not installed

Step 1: Login into <http://gowmu.wmich.edu>

Step 2: On the Left side pane you will see Software Downloads-> VPN –virtual private network Download. Click on VPN- Virtual Private Network Downloads.



Step 3:

Choose Pulse Secure according to the Operating system version and Click here to download. For most people this will be the download labeled 64-bit.

Windows VPN Clients

Pulse Secure for Windows 64-bit

Description: This setup application installs all Pulse Secure components. Compatible with 64-bit Windows 7 and newer systems.
[CLICK HERE TO DOWNLOAD](#)

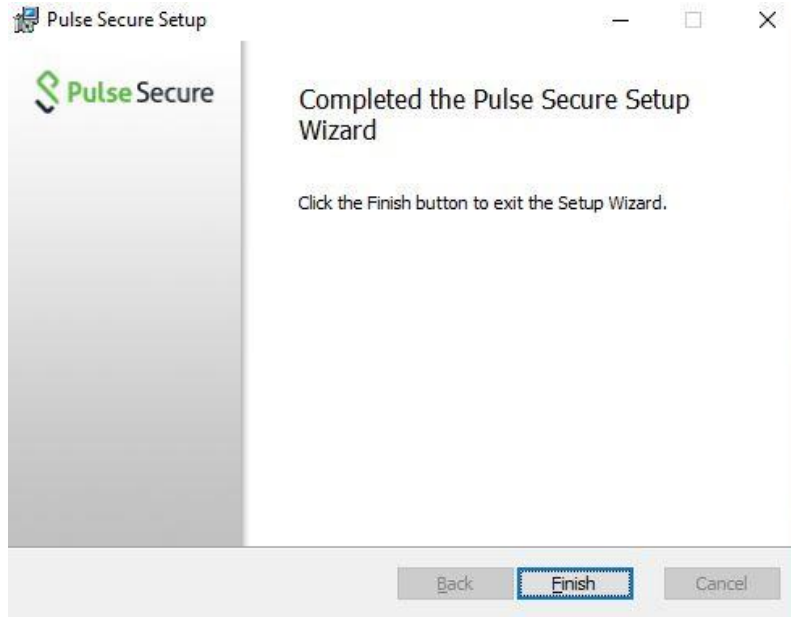
Pulse Secure for Windows 32-bit

Description: This setup application installs all Pulse Secure components. Compatible with 32-bit Windows 7 and newer systems.
[CLICK HERE TO DOWNLOAD](#)

When the installer finishes downloading, open it. You should see a screen like this:



Click next or continue through the steps of the installer. During the process you will see a new window that pops up asking for permission to install the application. Click the “Yes” button to continue with the installation. When the installer finishes you will see a window like this that indicates that the installation has completed.



Now you should be able to access your file share off campus. When you wish to disconnect, open the Pulse Secure app and choose “Disconnect” next to the WMU connection.