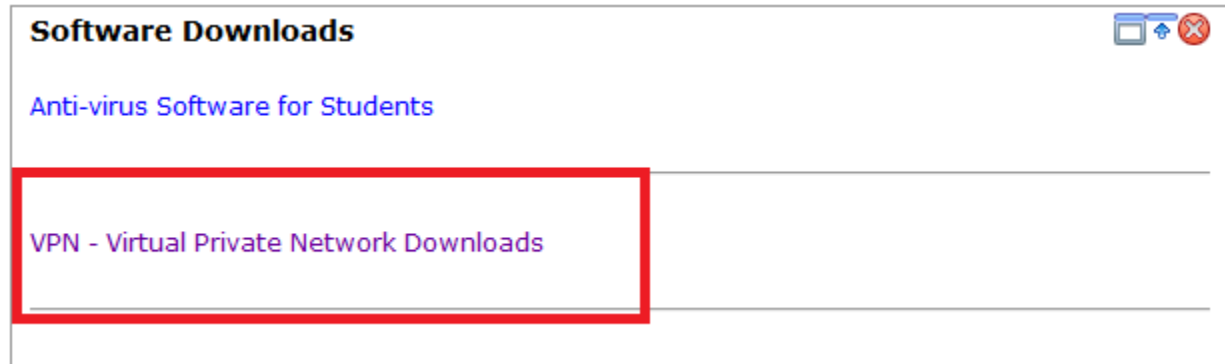


File Server access (OFF Campus): VPN

Step 1: Login into <http://gowmu.wmich.edu>

Step 2: On the Left side pane you will see Software Downloads-> VPN –virtual private network Download. Click on VPN- Virtual Private Network Downloads.



Step 3:

Depending on which version of MacOS you have installed choose the proper download below.

macOS VPN Clients**Pulse Secure for macOS**

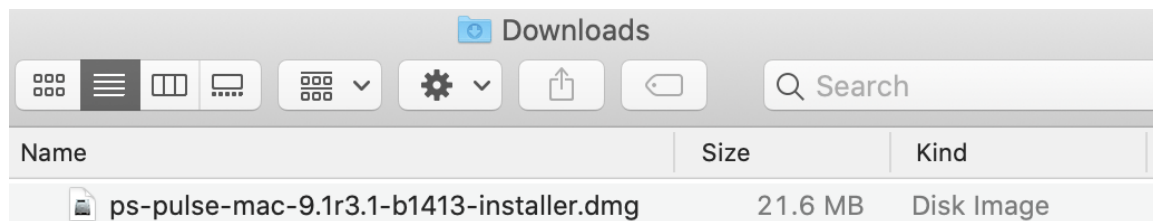
Description: This setup application installs all Pulse Secure components. Compatible with macOS 10.11 and newer systems.
[CLICK HERE TO DOWNLOAD](#)

Pulse Secure for macOS - Legacy

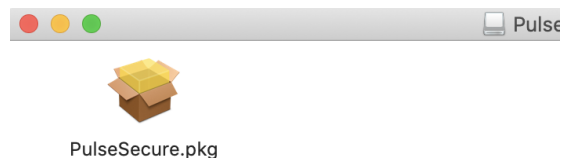
Description: This setup application installs all Pulse Secure components. Compatible with macOS 10.10 and 10.9 systems.
[CLICK HERE TO DOWNLOAD](#)

Step 4:

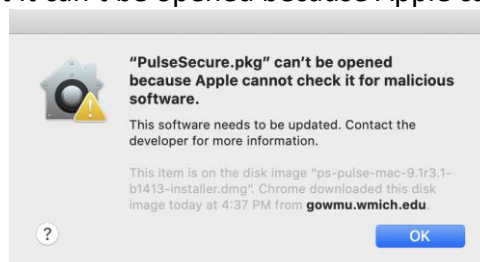
Open the location where you saved the installer and double click it to begin the installation. (This will most likely be your Downloads folder by default)

**Step 5:**

A new window will open that looks similar to this:



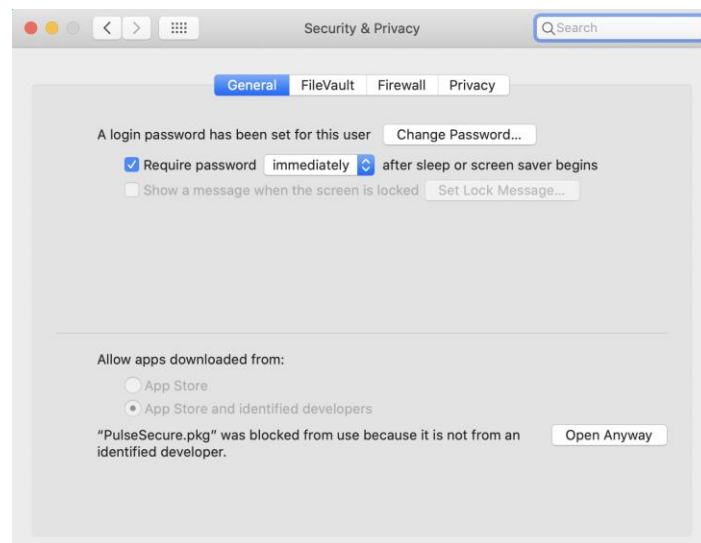
Double click on PulseSecure.pkg to begin the installation. During installation you may see a message saying that it can't be opened because Apple cannot check the file.



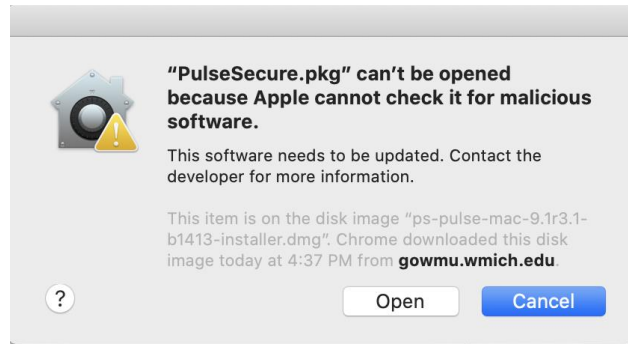
To resolve this issue open System Preferences and then open the Security & Privacy settings.



Navigate to the General tab and at the bottom of the window click the button that says “Open Anyway”.



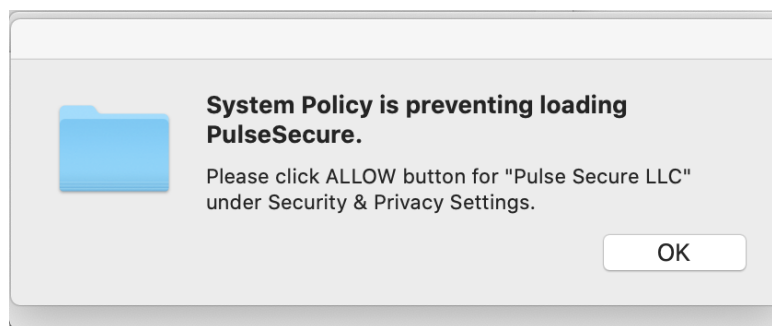
This will open a new window. Click the button that says “Open” to continue the installation.



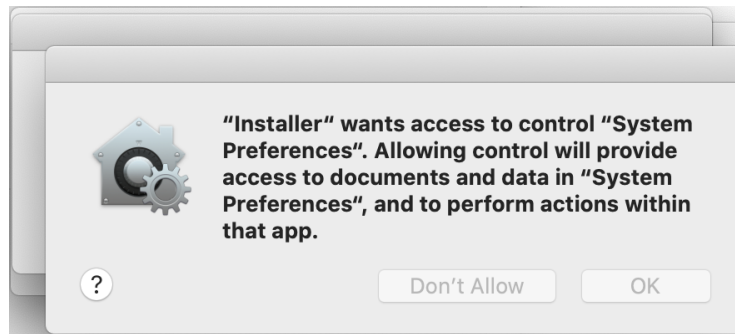
Click continue in the installation and accept the defaults for each additional prompt.



During Installation you may receive a message that "System Policy is preventing loading PulseSecure". Click the "OK" button to continue for now.

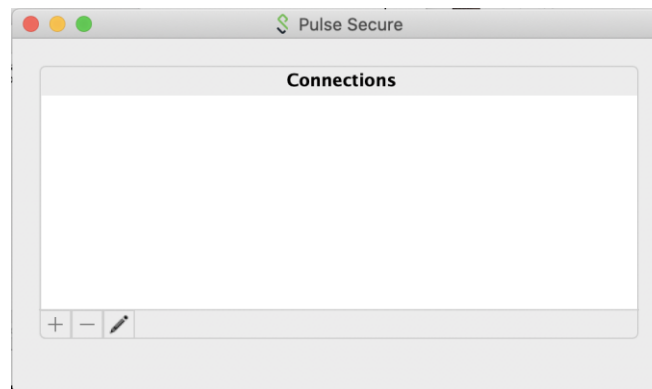


A second window will pop up asking for you to allow the installer to continue its installation on the computer. Click "OK" to continue with the installation.

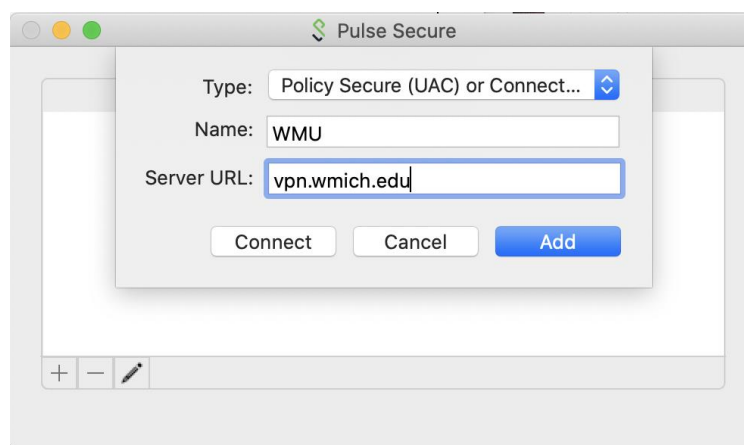


In the top bar of your computer screen you can click the Pulse Secure icon in order to bring up the VPN connection menu. Since we are setting up the VPN for the first time click the option to "Open Pulse Secure".

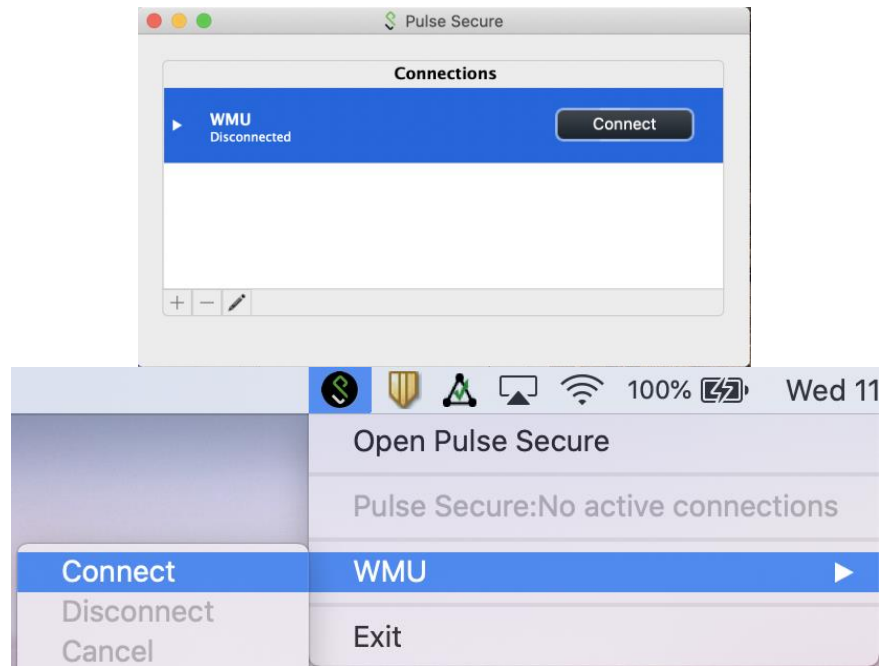
When the Pulse Secure window opens click the "+" button in the bottom, left-hand corner to add a connection.



When the Add Connection screen pops up in the "Name" field enter what you would like the display name for the connection to be (usually just WMU is fine). Then, in the "Server URL field" enter "vpn.wmich.edu" and click the "Add" button.



To connect to the VPN you can either click the connect button inside the Pulse Secure app or you can click on the “Connect” option inside the menu in the top bar of your screen.



You can now connect to the file server the same as you would on campus.