

File Server access (OFF Campus): VPN*

Prerequisite: Java Installation required Faculty and Staff laptops will have Java and VPN client preinstalled. This is just for reference.

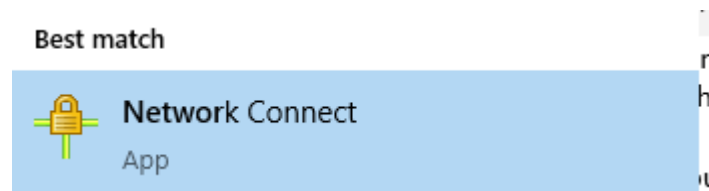
First check to make sure the VPN client has not already been installed. Go to the start menu.



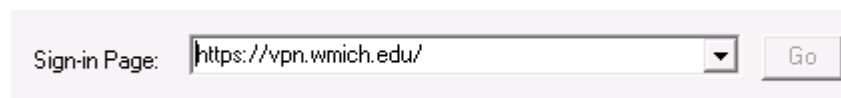
In the search bar type in “Network Connect”



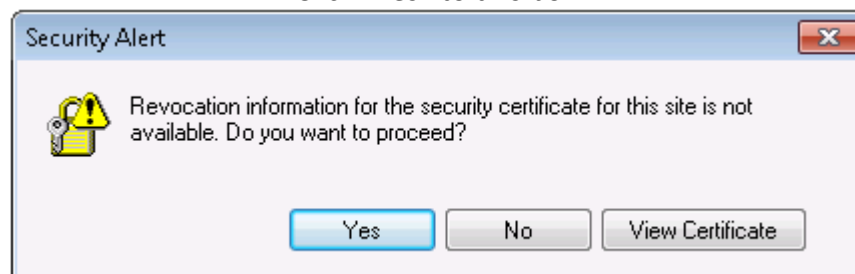
If this program comes up in your search, you do not have to re-install the Network Connect client; you can just open the application from there.



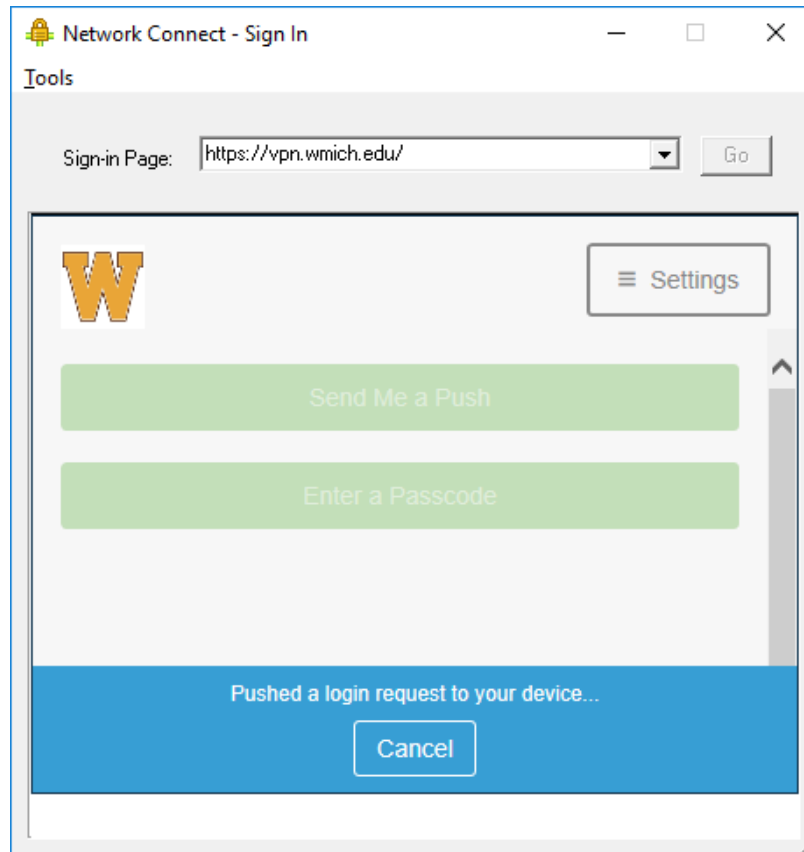
If this box is blank once you have opened up “Network Connect” type in “vpn.wmich.edu” and click “Go”.



Click “Yes” to this box.



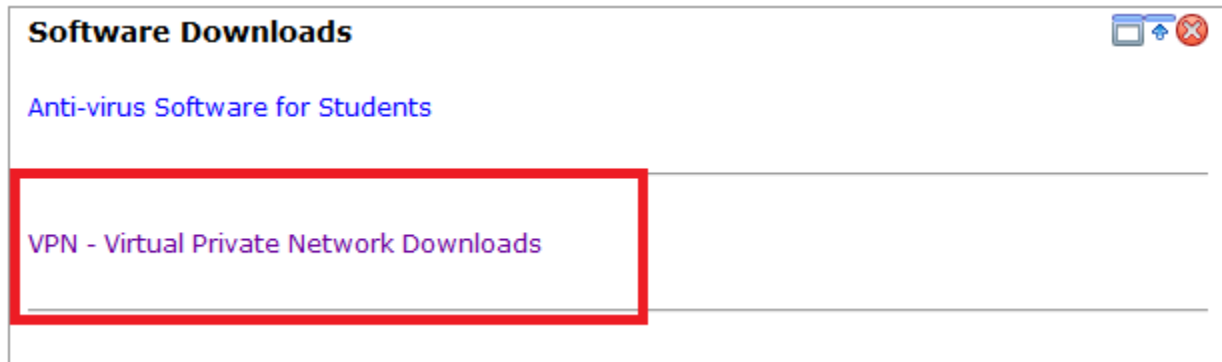
From here login with your Bronco ID and password. If you have Two-Factor Authentication enabled on your account, you will see a window that looks similar to the image below. You will need to accept the push notification on your phone, or secondary authentication device. If you do not have Two-Factor enabled on your account the VPN should continue to connect to the WMU network.



Alternate method if VPN not installed

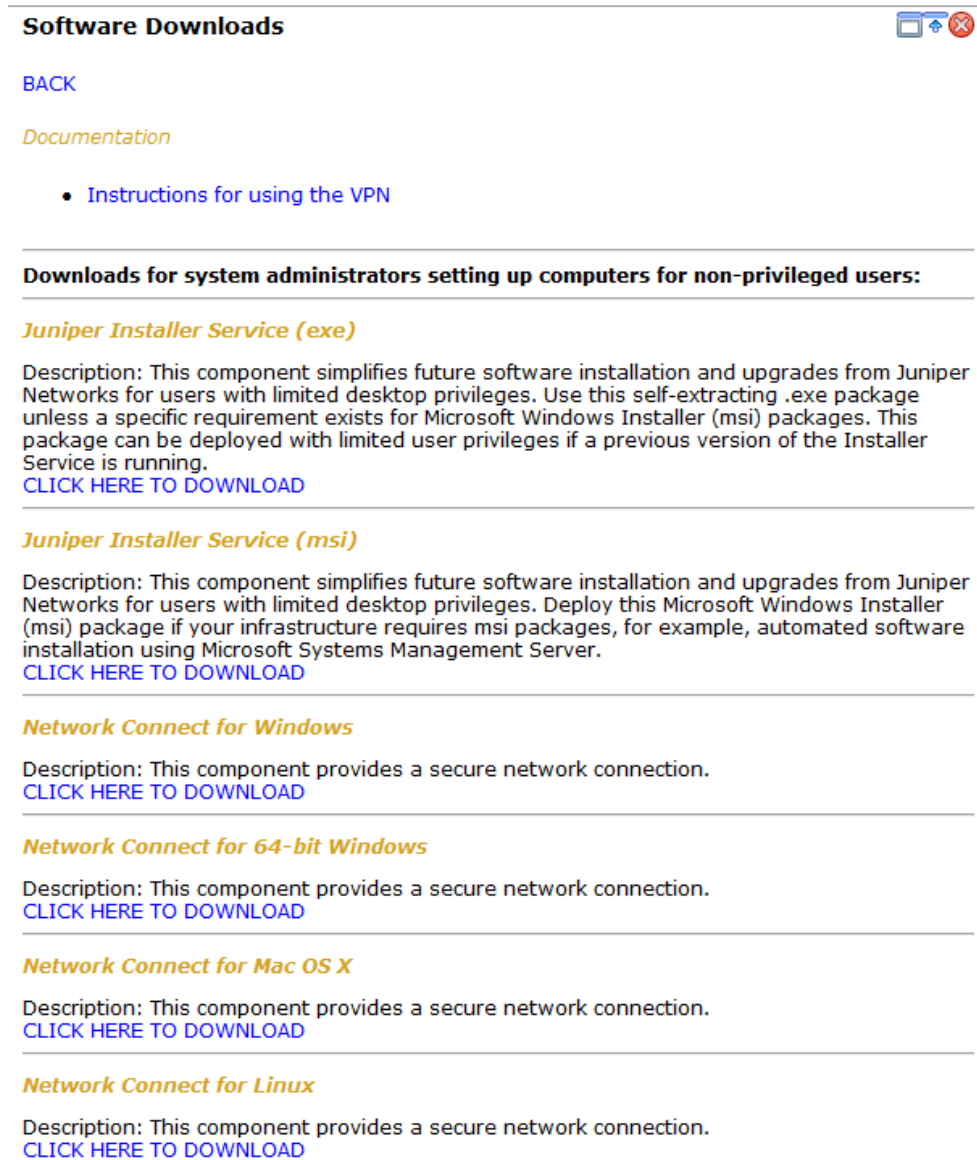
Step 1: Login into <http://gowmu.wmich.edu>

Step 2: On the Left side pane you will see Software Downloads-> VPN –virtual private network Download.
Click on VPN- Virtual Private Network Downloads.



Step 3:

Choose Network Connect according to the Operating system version and Click here to download.



Software Downloads

[BACK](#)

[Documentation](#)

- [Instructions for using the VPN](#)

Downloads for system administrators setting up computers for non-privileged users:

Juniper Installer Service (exe)

Description: This component simplifies future software installation and upgrades from Juniper Networks for users with limited desktop privileges. Use this self-extracting .exe package unless a specific requirement exists for Microsoft Windows Installer (msi) packages. This package can be deployed with limited user privileges if a previous version of the Installer Service is running.
[CLICK HERE TO DOWNLOAD](#)

Juniper Installer Service (msi)

Description: This component simplifies future software installation and upgrades from Juniper Networks for users with limited desktop privileges. Deploy this Microsoft Windows Installer (msi) package if your infrastructure requires msi packages, for example, automated software installation using Microsoft Systems Management Server.
[CLICK HERE TO DOWNLOAD](#)

Network Connect for Windows

Description: This component provides a secure network connection.
[CLICK HERE TO DOWNLOAD](#)

Network Connect for 64-bit Windows

Description: This component provides a secure network connection.
[CLICK HERE TO DOWNLOAD](#)

Network Connect for Mac OS X

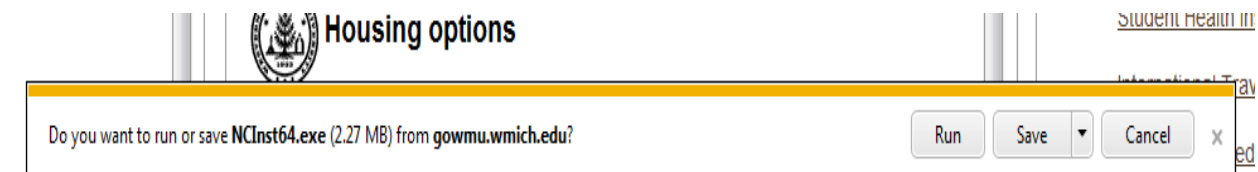
Description: This component provides a secure network connection.
[CLICK HERE TO DOWNLOAD](#)

Network Connect for Linux

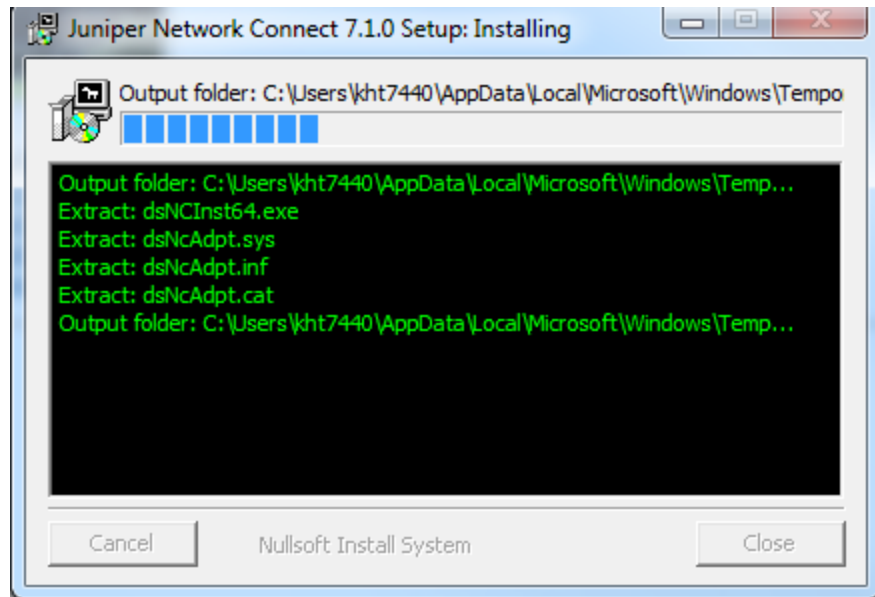
Description: This component provides a secure network connection.
[CLICK HERE TO DOWNLOAD](#)

Step 4:

Click on run.

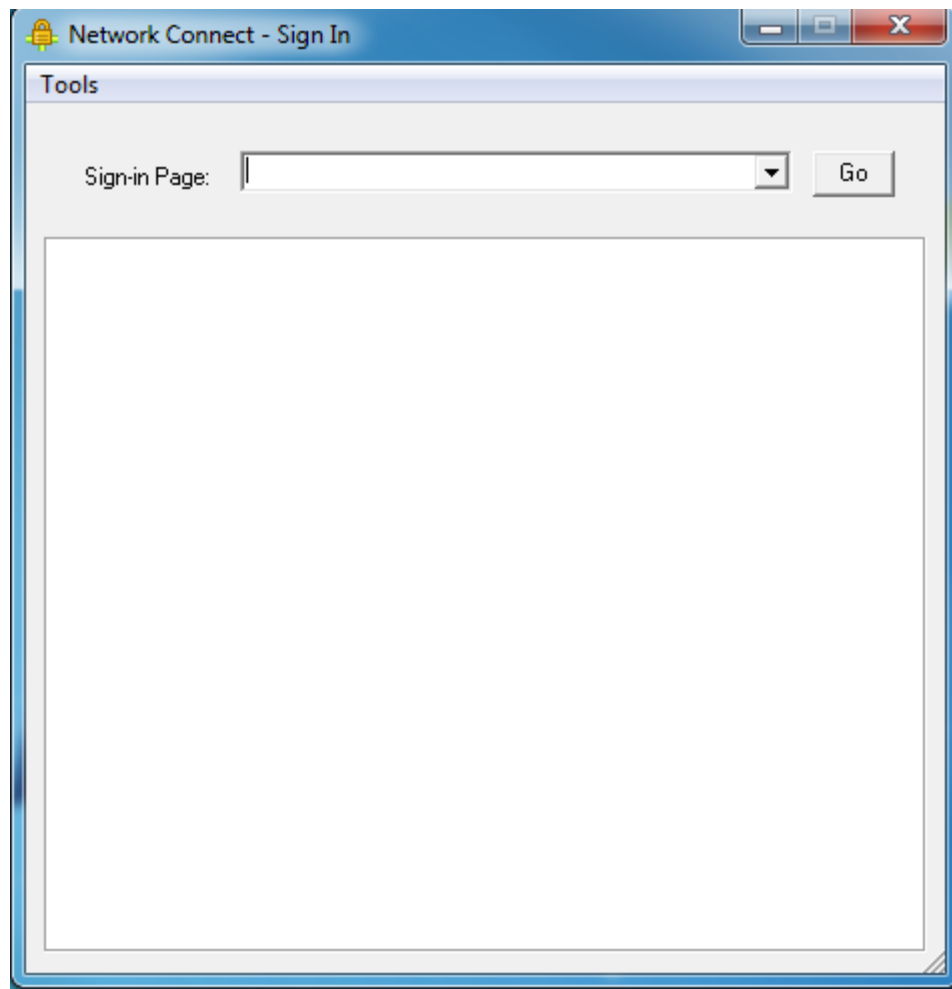


Step 5: Click Yes on the next windows authorizing installation and the you should see the following screen.



Now your installation is done.

Step 6: Click on Start->All programs->Juniper Network-> Network Connect.



Step 7: Sign in page type in: vpn.wmich.edu

Sign with your bronco Net ID and password



Now you should be able to access your file share off campus.

You should then see this small icon in your taskbar (the taskbar is the lower right corner of windows next to the clock). Once it turns Yellow, you are connected to the WMU network.



Once you are finished using the VPN, right click on the icon in your taskbar. You will see the below context menu. Click "Sign Out".

