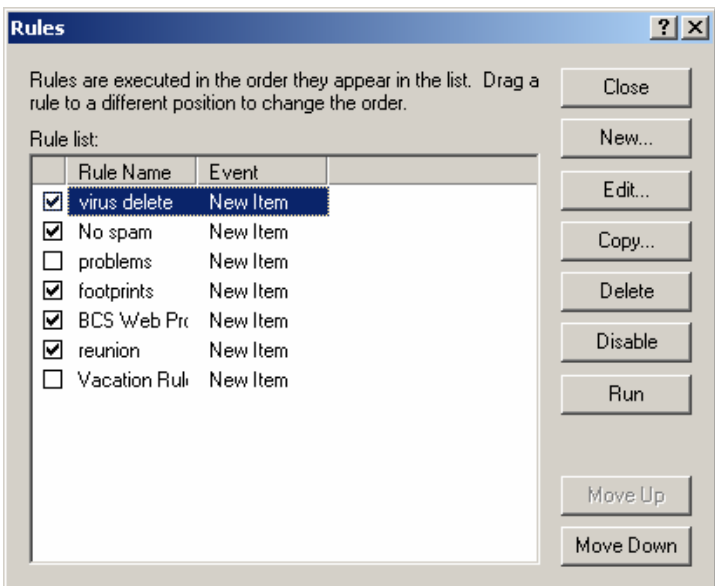
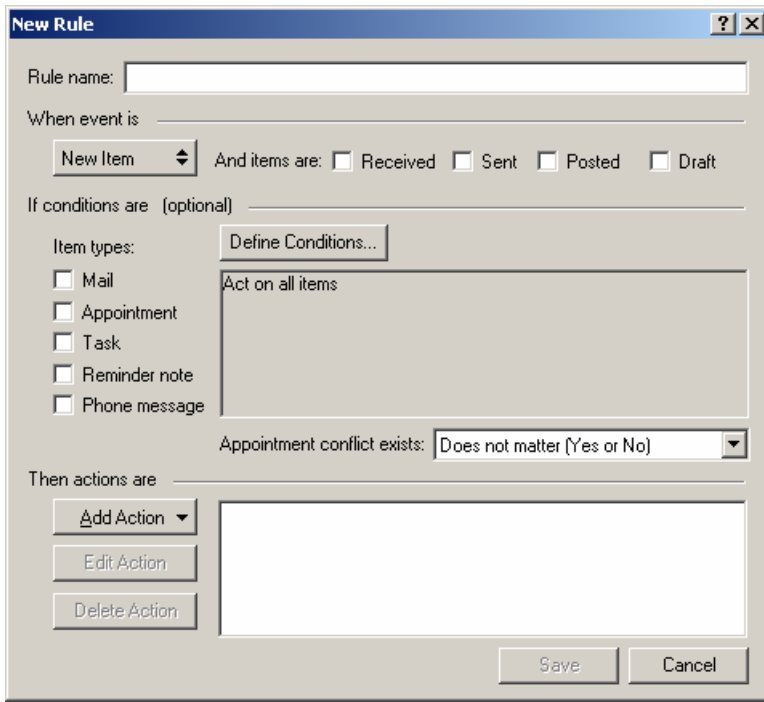


1. From the main GroupWise window go to Tools and select the Rules option.

(Please see note in step 9 before you get too far!)

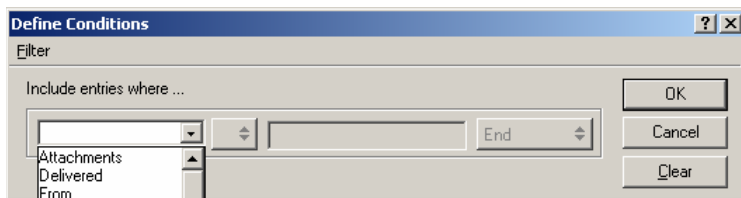


2. From this screen, select New...

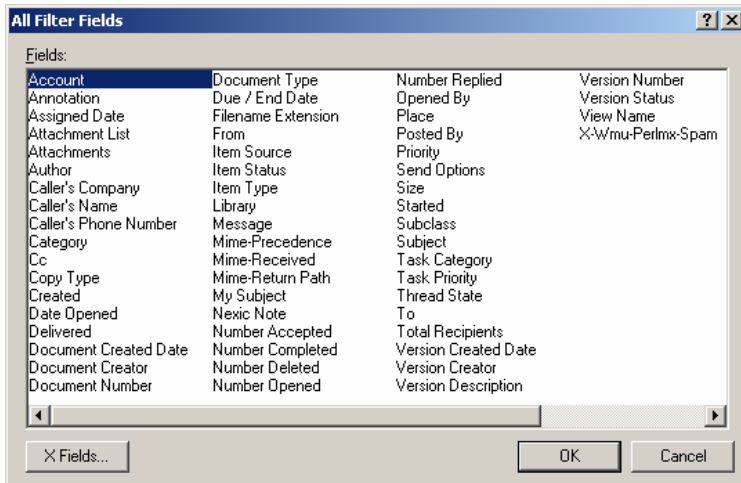


3. In the Rule name: box, give the rule a name. "Less Spam" might be a good name for this rule.

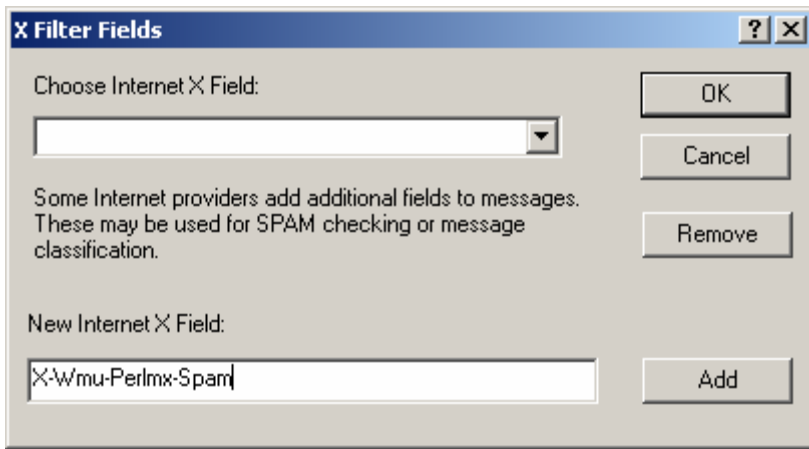
Now click the box that reads "Define Conditions..."



4. Go to the last entry in the drop down list that reads "All Fields..."



5. Locate and select the "X-Fields..." box by clicking it once.

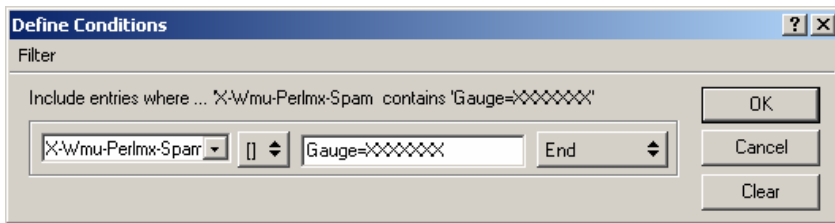


6. In bottom-most box type in the following:

X-Wmu-Perlmx-Spam

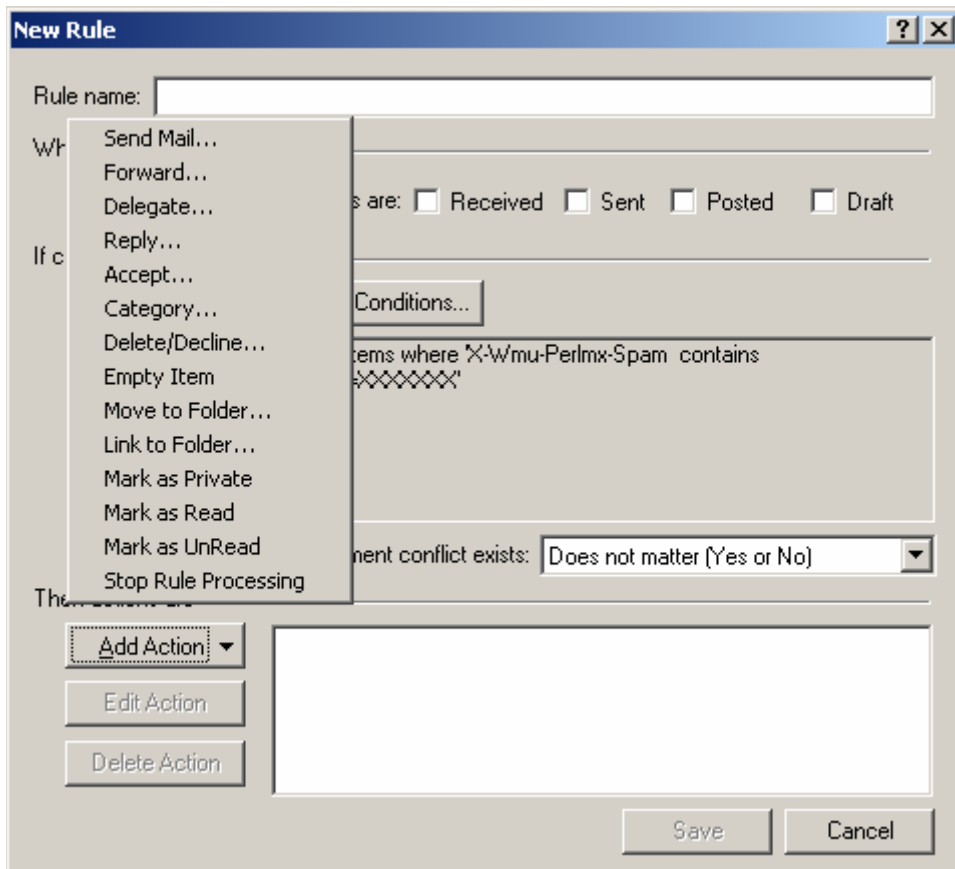
then press the Add button...

now press the OK button



7. In the empty middle box, type in Gauge=XXXXXXXX

(7 X's is 70%, 8 X's is 80%)

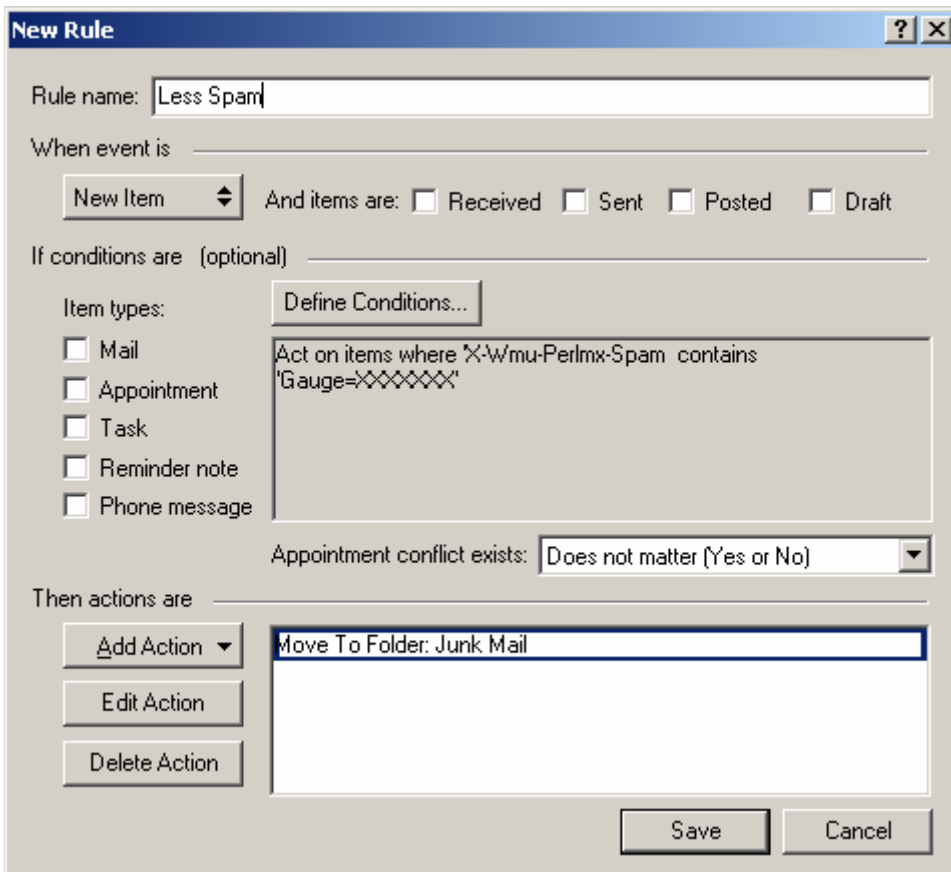


8. Now press the "Add Action" button, and select "Move to Folder..."



8 (cont'd)

Now select "Junk Mail" by placing a checkmark next to Junk Mail and press the Move button.



9. To the left is a representation of what the completed rule should look like.

Once you are sure that it is exactly like this, press the Save button to keep the rule.

Keep closing windows until you are back at the main GroupWise screen.

(Note: If the Junk Mail folder does not already exist, you can opt to place your spam into another folder that already exists; if you have no extra folder, you should create a new, empty folder before you begin creating this rule.)