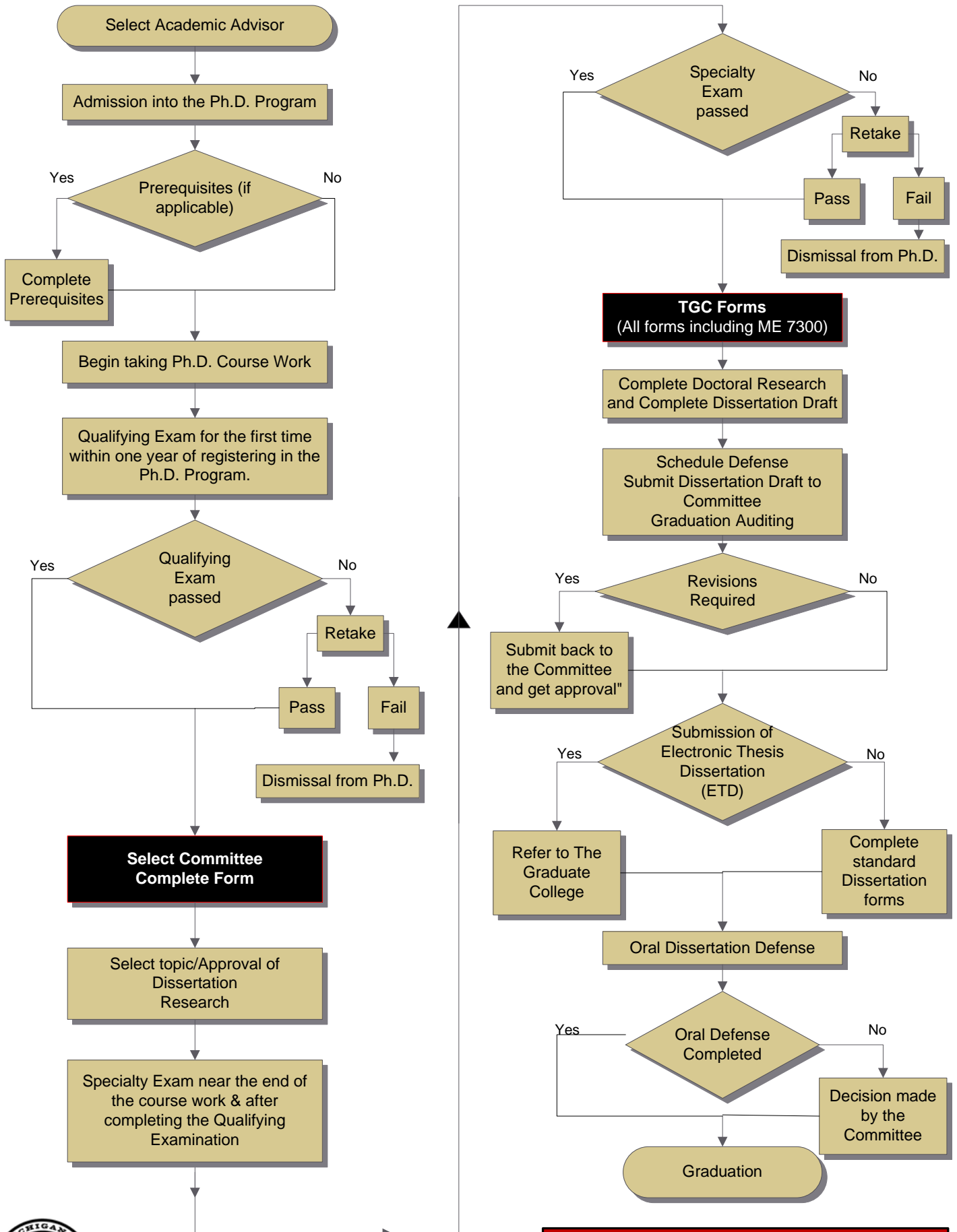


# Narrative for the Flowchart: Department of Mechanical Engineering Doctoral Program



[Click here to access the Program's Time to Degree](#)



## Narrative for the Flowchart: Department of Mechanical Engineering Doctoral Program

1. Select the Academic Advisor
2. Admission into the Ph.D. program.
3. Complete Prerequisites if applicable.
4. Begin the Ph.D. course work.
5. Take the Qualifying Exam for the first time within one year of registering in
6. the Ph.D. Program.
7. Pass the Qualifying Exam.
8. Select the Dissertation Committee and Complete the Form
9. Select the topic and secure the approval of the Dissertation Research
10. Take Specialty Exam near the end of the course work & after finishing the Qualifying Examination.
11. Pass the Specialty Examination.
12. Complete **The Graduate College (TGC)** forms.
13. Complete the Doctoral Research and Complete the Dissertation Draft
14. Schedule the defense and submit dissertation draft to the committee. Apply for the Graduation Audit.
15. Complete the required revisions.
16. Submit the **Electronic Thesis Dissertation (ETD)**.
18. Complete the Oral Dissertation Defense.
18. Graduation.

