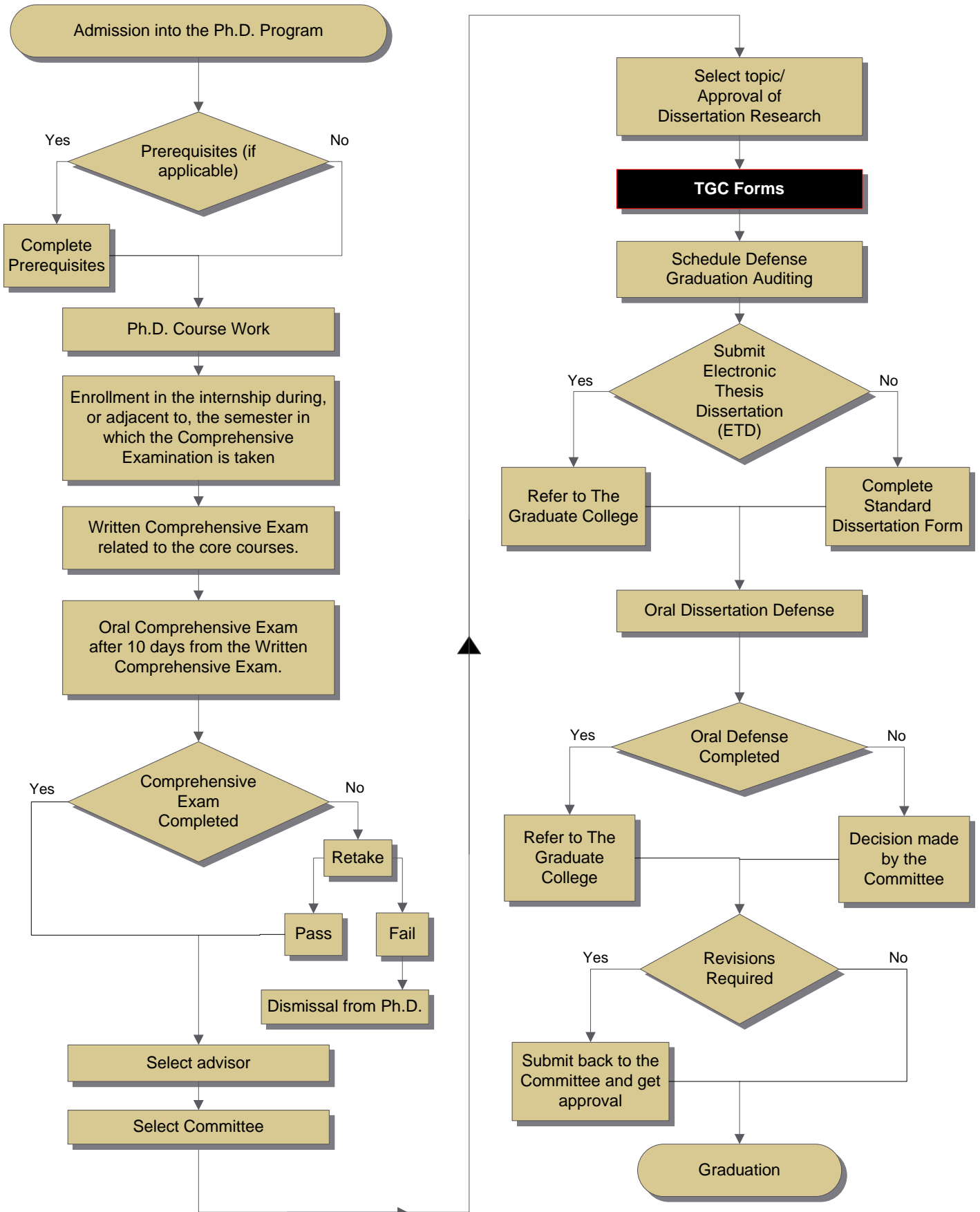


# Narrative for the Flowchart: Department of Industrial Engineering Doctoral Degree



[Click here to access the Program's Time to Degree](#)



## Narrative for the Flowchart: Department of Industrial Engineering Doctoral Degree

1. Admission into the Ph.D. program.
2. Complete Prerequisites if applicable.
3. Start the Ph.D. course work.
4. Enroll in the internship during, or adjacent to, the semester in which the  
1. Comprehensive Examination is taken.
5. Take Written Comprehensive Exam related to the core courses.
6. Take the Oral Comprehensive Exam after 10 days from the Written  
2. Comprehensive Exam.
7. Pass the Comprehensive Exam.
8. Select the Dissertation Advisor
9. Select the Committee
10. Select the topic and secure the approval of the Dissertation Research
11. Complete **The Graduate College** (TGC) forms.
12. Schedule the defense and apply for the Graduation Audit.
13. Submit the **Electronic Thesis Dissertation** (ETD).
14. Complete the Oral Dissertation Defense.
15. Complete the required revisions.
16. Graduation.

