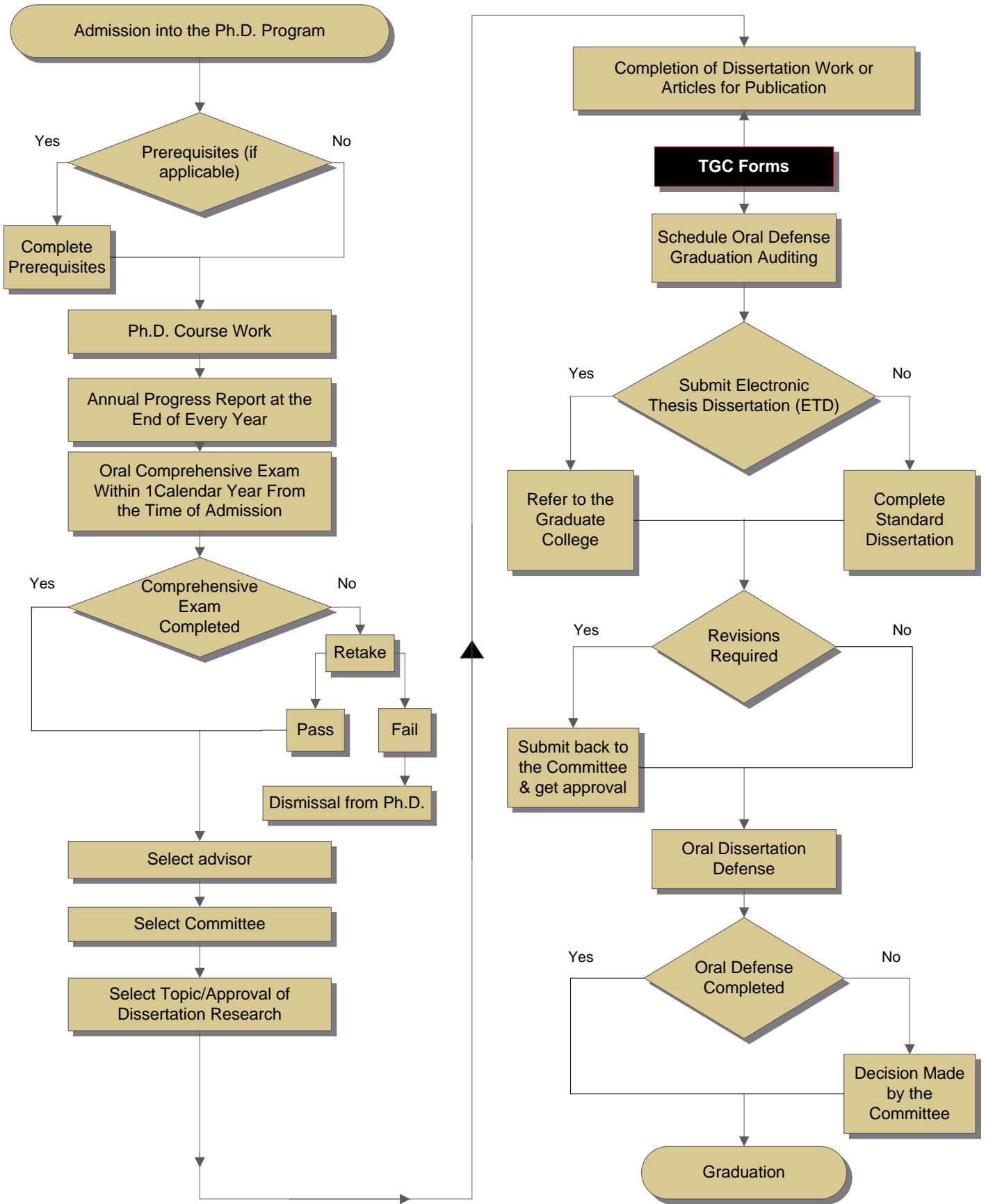


Flowchart: Department of Paper Engineering Doctoral Program



[Click here to access the Program's Time to Degree](#)



Narrative for the Flowchart: Paper Engineering Doctoral Degree

1. Admission into the Ph.D. program.
2. Complete Prerequisites if applicable.
3. Start the Ph.D. course work.
4. Submit an Annual Progress Report at the end of every year.
5. Take Oral Comprehensive Exam within 1 calendar year from the time of admission.
6. Pass the Comprehensive Exam.
7. Select the Dissertation Advisor.
8. Select the Committee
9. Select the Topic and secure approval of the Dissertation Research
10. Complete The Graduate College (TGC) forms.
11. Schedule the defense and apply for the Graduation Audit.
12. Submit the Electronic Thesis Dissertation (ETD).
13. Complete the required revisions.
14. Complete the Oral Dissertation Defense.
15. Graduation.

