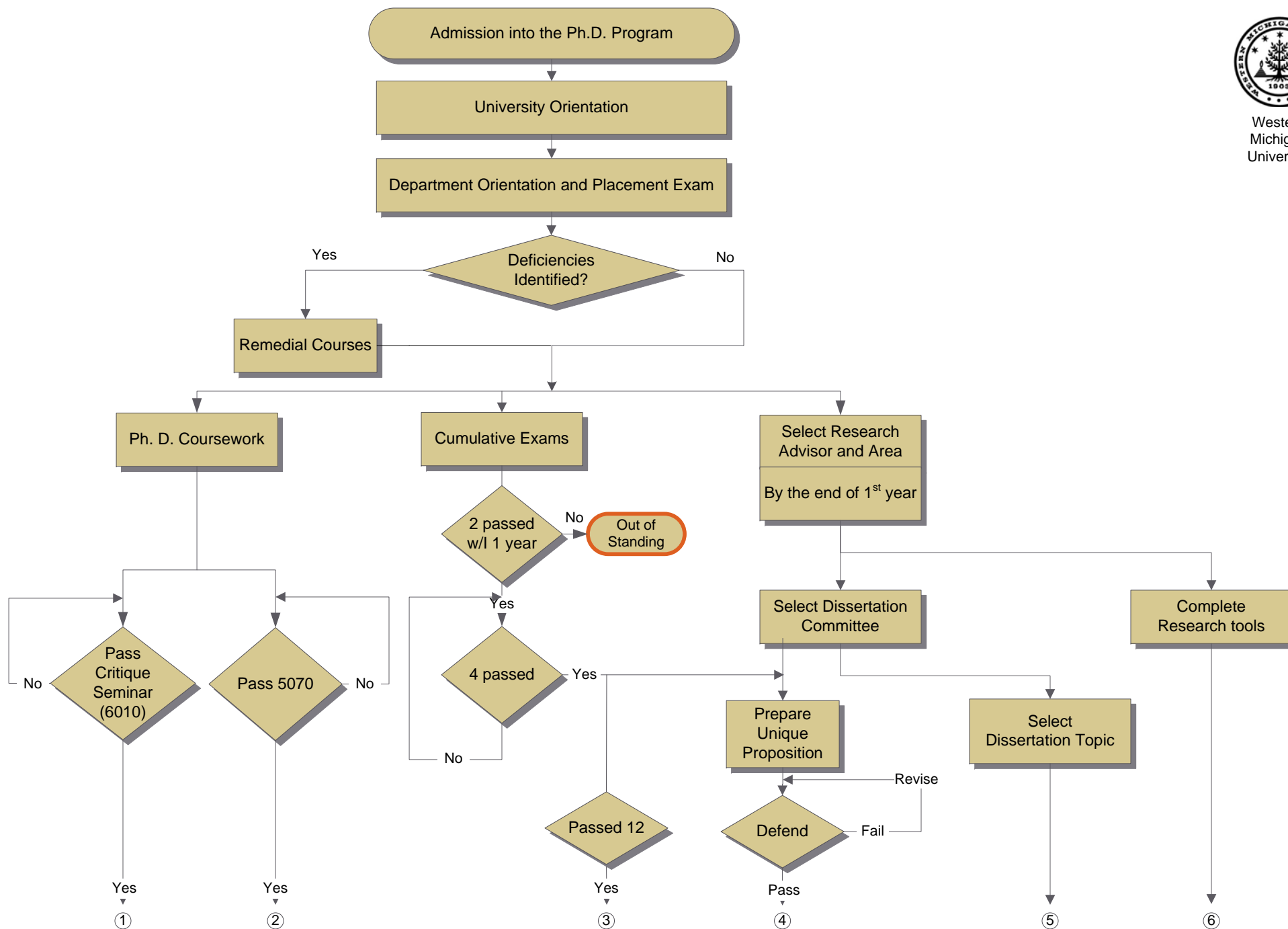


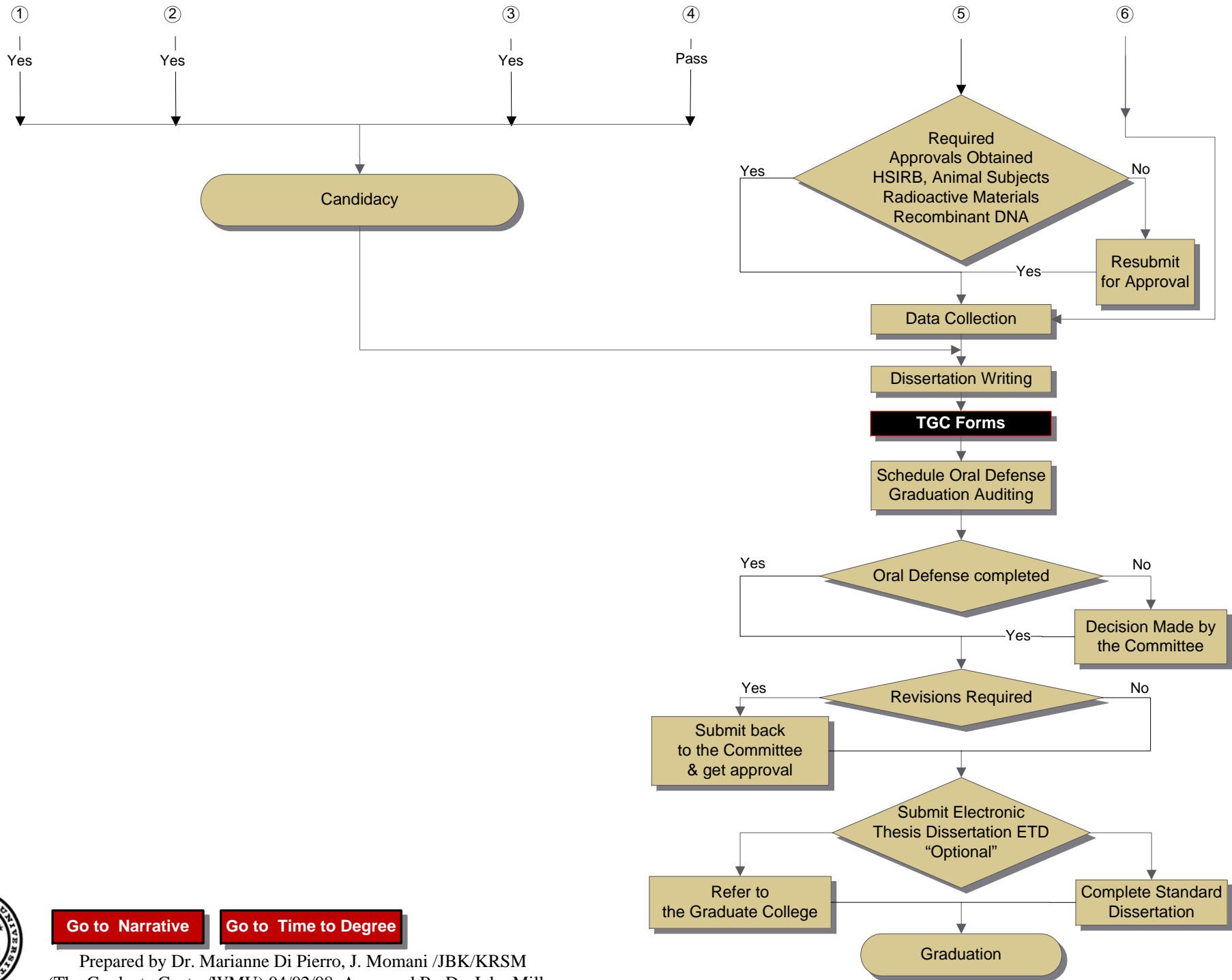
# Flowchart: Department of Chemistry Doctoral Program



Western Michigan University



Continued on page 2



**Go to Narrative**   **Go to Time to Degree**

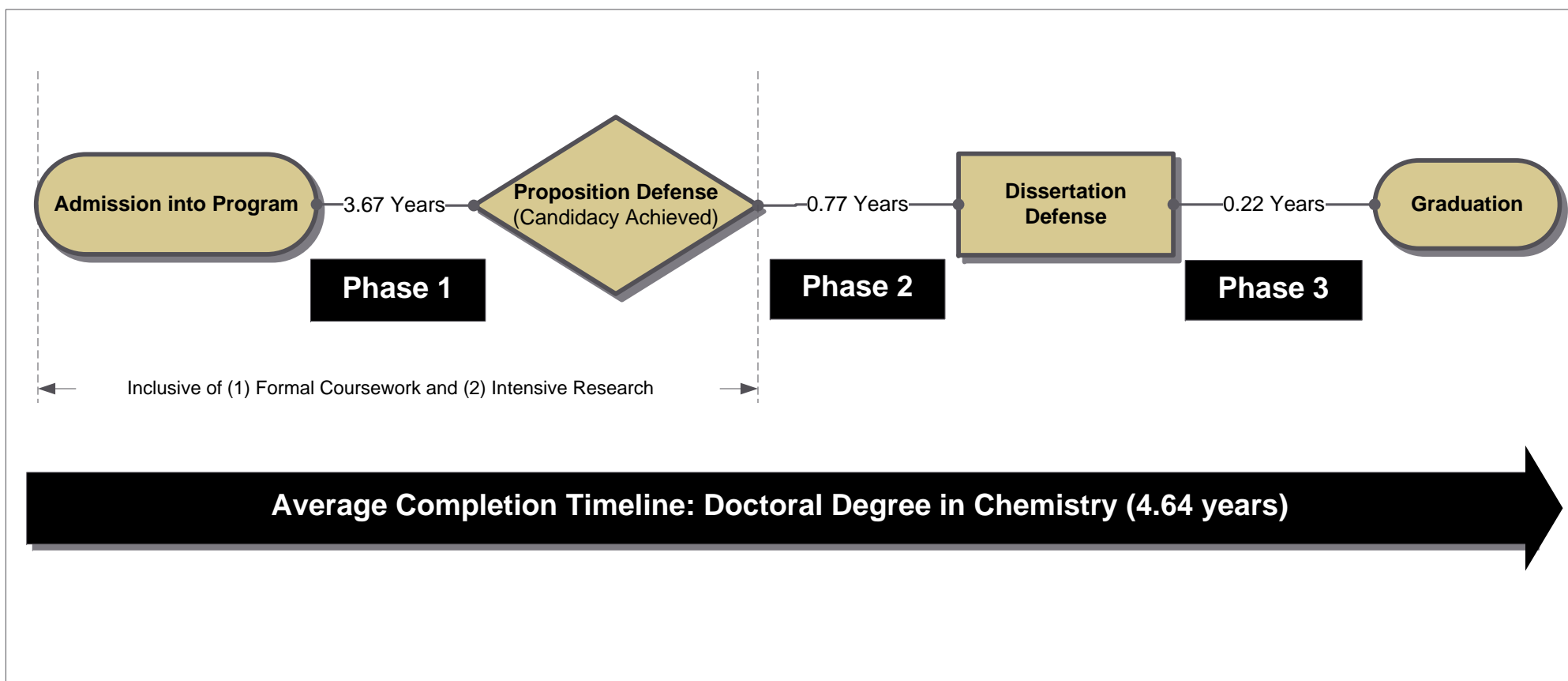
## Title Narrative for the Flowchart: Department of Chemistry Doctoral Degree

1. Admission into the Ph.D. program.
2. Take Placement Exam (deficiencies remedied by course work).
3. Complete prerequisites if applicable.
4. Start the Ph.D. course work.
5. Select Research advisor and area of study within the 1st Year.
6. Select Dissertation Committee: advisor, 2-faculty members and 1 member (from outside department).
7. Start Cumulative Exams, total of 12 questions within the first 3 years. Complete at least 3 questions in different area from major. Finish 4 cumulative questions before Defense of Proposal.
8. Present Critique Seminar (within the first two years).
9. After finishing 4 cumulative exams, submit and defend proposal for unique research topic (unrelated to dissertation).
10. Select the dissertation topic and get approval of the committee.
11. Complete Unique Proposition defense
12. Candidacy Requirements: Have the following completed by the end of the 3rd year:
  - Any deficiency identified by the entry examinations.
  - 5 of the 7 Chemistry courses with a minimum GPA 3.0
  - 12 Cumulative Examination questions
  - The Proposing Defense.
13. Complete the Research Tools: 2 of the following
  - Competence in computer programming and use (e.g. take a course)
  - Working knowledge of Statistics (e.g. take a course)
  - Proficiency in design manufacture of electronic circuit or devise
  - Master design repair and development of instrument used as part of an upper-level course or research project
  - Reading knowledge of foreign language
14. HSIRB, Animal Subjects (IACUC), Radioactive Materials (RSC), Recombinant DNA (RDBC) approval
15. Data Collection
16. Complete **The Graduate College (TGC)** forms.
17. Schedule the defense and apply for the Graduation Auditing.
18. Complete the Oral Dissertation Defense.
19. Complete the required revisions.
20. Submit the **Electronic Thesis Dissertation (ETD)** (optional).
21. Graduation.





# WESTERN MICHIGAN UNIVERSITY



Note: Information above is based on data collected from WMU Profiles of Graduated Doctoral Students AY: 2000 – 2006